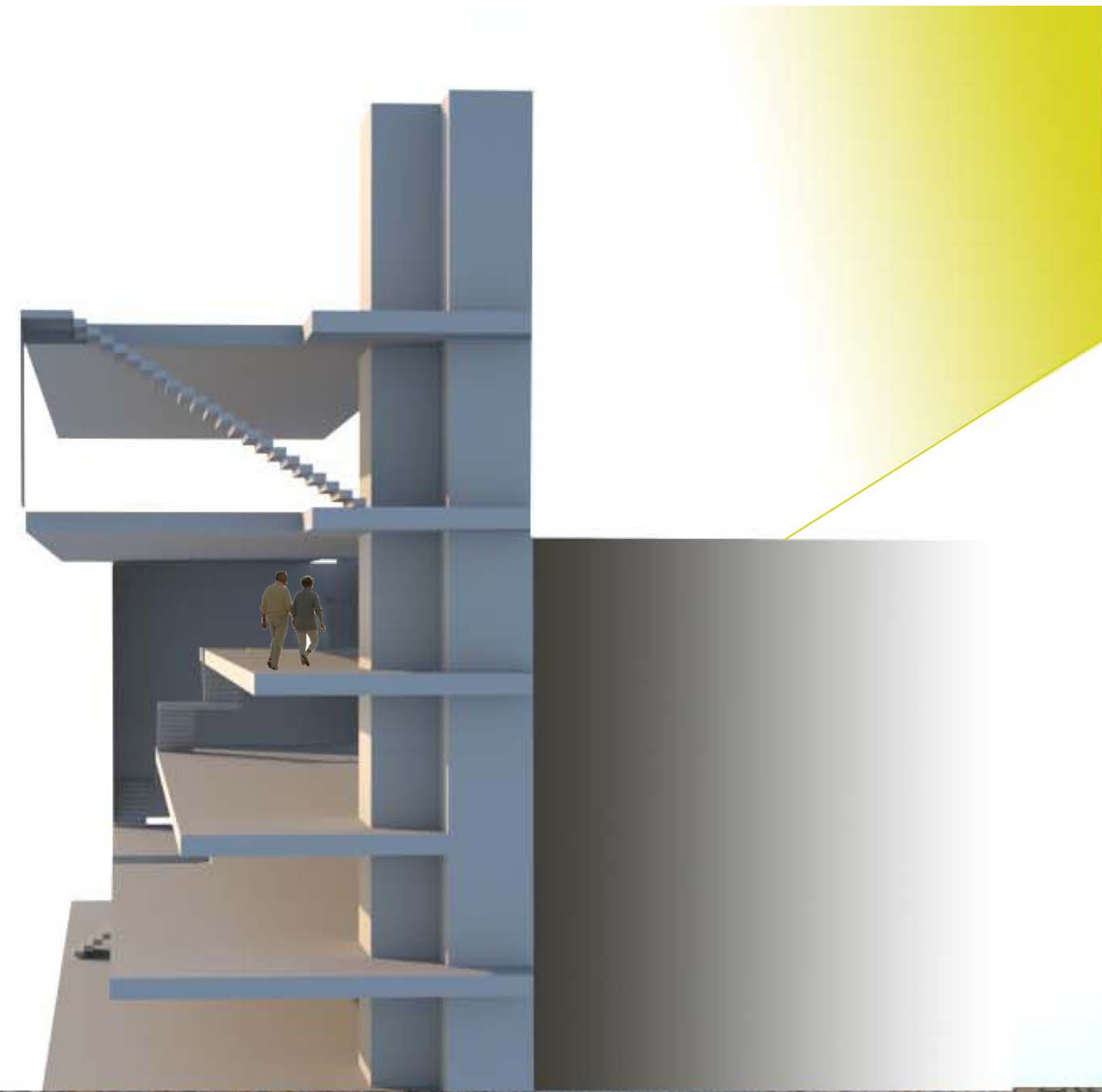


Transverse Sections showing sunlight

Summer
July 12th 9am
sun angle is higher and as a result more of the interior gets ambient sunlight, especially the ground floor which im trying to light up.



Winter

January 12th 9am
Sun angle is lower, resulting in less of the floor plates getting ambient light. Although the lowest floors still appear lit, the top floors only have this direct light for a short time